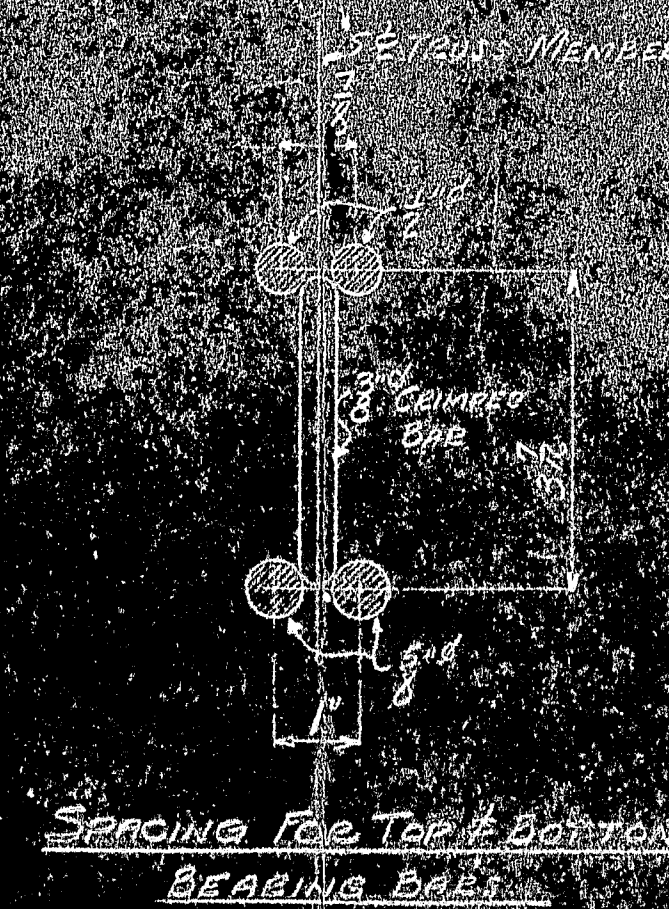


BAR SCHEDULE

BAR NO.	SIZE	LENGTH	QUANTITY	REMARKS
C1-1	1/2"	20'-0"	2	TOP CROSS BARS
C1-2	1/2"	20'-0"	2	TOP CROSS BARS
C1-3	1/2"	20'-0"	2	TOP CROSS BARS
C1-4	1/2"	20'-0"	2	TOP CROSS BARS
C1-5	1/2"	20'-0"	2	TOP CROSS BARS
C1-6	1/2"	20'-0"	2	TOP CROSS BARS
C1-7	1/2"	20'-0"	2	TOP CROSS BARS
C1-8	1/2"	20'-0"	2	TOP CROSS BARS
C1-9	1/2"	20'-0"	2	TOP CROSS BARS
C1-10	1/2"	20'-0"	2	TOP CROSS BARS
C1-11	1/2"	20'-0"	2	TOP CROSS BARS
C1-12	1/2"	20'-0"	2	TOP CROSS BARS
C1-13	1/2"	20'-0"	2	TOP CROSS BARS
C1-14	1/2"	20'-0"	2	TOP CROSS BARS
C1-15	1/2"	20'-0"	2	TOP CROSS BARS
C1-16	1/2"	20'-0"	2	TOP CROSS BARS
C1-17	1/2"	20'-0"	2	TOP CROSS BARS
C1-18	1/2"	20'-0"	2	TOP CROSS BARS
C1-19	1/2"	20'-0"	2	TOP CROSS BARS
C1-20	1/2"	20'-0"	2	TOP CROSS BARS
C1-21	1/2"	20'-0"	2	TOP CROSS BARS
C1-22	1/2"	20'-0"	2	TOP CROSS BARS
C1-23	1/2"	20'-0"	2	TOP CROSS BARS
C1-24	1/2"	20'-0"	2	TOP CROSS BARS
C1-25	1/2"	20'-0"	2	TOP CROSS BARS
C1-26	1/2"	20'-0"	2	TOP CROSS BARS
C1-27	1/2"	20'-0"	2	TOP CROSS BARS
C1-28	1/2"	20'-0"	2	TOP CROSS BARS
C1-29	1/2"	20'-0"	2	TOP CROSS BARS
C1-30	1/2"	20'-0"	2	TOP CROSS BARS
C1-31	1/2"	20'-0"	2	TOP CROSS BARS
C1-32	1/2"	20'-0"	2	TOP CROSS BARS
C1-33	1/2"	20'-0"	2	TOP CROSS BARS
C1-34	1/2"	20'-0"	2	TOP CROSS BARS
C1-35	1/2"	20'-0"	2	TOP CROSS BARS
C1-36	1/2"	20'-0"	2	TOP CROSS BARS
C1-37	1/2"	20'-0"	2	TOP CROSS BARS
C1-38	1/2"	20'-0"	2	TOP CROSS BARS
C1-39	1/2"	20'-0"	2	TOP CROSS BARS
C1-40	1/2"	20'-0"	2	TOP CROSS BARS
C1-41	1/2"	20'-0"	2	TOP CROSS BARS
C1-42	1/2"	20'-0"	2	TOP CROSS BARS
C1-43	1/2"	20'-0"	2	TOP CROSS BARS
C1-44	1/2"	20'-0"	2	TOP CROSS BARS
C1-45	1/2"	20'-0"	2	TOP CROSS BARS
C1-46	1/2"	20'-0"	2	TOP CROSS BARS
C1-47	1/2"	20'-0"	2	TOP CROSS BARS
C1-48	1/2"	20'-0"	2	TOP CROSS BARS
C1-49	1/2"	20'-0"	2	TOP CROSS BARS
C1-50	1/2"	20'-0"	2	TOP CROSS BARS
C1-51	1/2"	20'-0"	2	TOP CROSS BARS
C1-52	1/2"	20'-0"	2	TOP CROSS BARS
C1-53	1/2"	20'-0"	2	TOP CROSS BARS
C1-54	1/2"	20'-0"	2	TOP CROSS BARS
C1-55	1/2"	20'-0"	2	TOP CROSS BARS
C1-56	1/2"	20'-0"	2	TOP CROSS BARS
C1-57	1/2"	20'-0"	2	TOP CROSS BARS
C1-58	1/2"	20'-0"	2	TOP CROSS BARS
C1-59	1/2"	20'-0"	2	TOP CROSS BARS
C1-60	1/2"	20'-0"	2	TOP CROSS BARS
C1-61	1/2"	20'-0"	2	TOP CROSS BARS
C1-62	1/2"	20'-0"	2	TOP CROSS BARS
C1-63	1/2"	20'-0"	2	TOP CROSS BARS
C1-64	1/2"	20'-0"	2	TOP CROSS BARS
C1-65	1/2"	20'-0"	2	TOP CROSS BARS
C1-66	1/2"	20'-0"	2	TOP CROSS BARS
C1-67	1/2"	20'-0"	2	TOP CROSS BARS
C1-68	1/2"	20'-0"	2	TOP CROSS BARS
C1-69	1/2"	20'-0"	2	TOP CROSS BARS
C1-70	1/2"	20'-0"	2	TOP CROSS BARS
C1-71	1/2"	20'-0"	2	TOP CROSS BARS
C1-72	1/2"	20'-0"	2	TOP CROSS BARS
C1-73	1/2"	20'-0"	2	TOP CROSS BARS
C1-74	1/2"	20'-0"	2	TOP CROSS BARS
C1-75	1/2"	20'-0"	2	TOP CROSS BARS
C1-76	1/2"	20'-0"	2	TOP CROSS BARS
C1-77	1/2"	20'-0"	2	TOP CROSS BARS
C1-78	1/2"	20'-0"	2	TOP CROSS BARS
C1-79	1/2"	20'-0"	2	TOP CROSS BARS
C1-80	1/2"	20'-0"	2	TOP CROSS BARS
C1-81	1/2"	20'-0"	2	TOP CROSS BARS
C1-82	1/2"	20'-0"	2	TOP CROSS BARS
C1-83	1/2"	20'-0"	2	TOP CROSS BARS
C1-84	1/2"	20'-0"	2	TOP CROSS BARS
C1-85	1/2"	20'-0"	2	TOP CROSS BARS
C1-86	1/2"	20'-0"	2	TOP CROSS BARS
C1-87	1/2"	20'-0"	2	TOP CROSS BARS
C1-88	1/2"	20'-0"	2	TOP CROSS BARS
C1-89	1/2"	20'-0"	2	TOP CROSS BARS
C1-90	1/2"	20'-0"	2	TOP CROSS BARS
C1-91	1/2"	20'-0"	2	TOP CROSS BARS
C1-92	1/2"	20'-0"	2	TOP CROSS BARS
C1-93	1/2"	20'-0"	2	TOP CROSS BARS
C1-94	1/2"	20'-0"	2	TOP CROSS BARS
C1-95	1/2"	20'-0"	2	TOP CROSS BARS
C1-96	1/2"	20'-0"	2	TOP CROSS BARS
C1-97	1/2"	20'-0"	2	TOP CROSS BARS
C1-98	1/2"	20'-0"	2	TOP CROSS BARS
C1-99	1/2"	20'-0"	2	TOP CROSS BARS
C1-100	1/2"	20'-0"	2	TOP CROSS BARS



NOTE
FOR FORM 12 SPACING SEE DWG. 3031-8
FOR ALL OTHER NOTES SEE DWG. 3031-1

CUSTOMER THE PHOENIX BRIDGE CO. PHOENIXVILLE, PA.		RELIANCE STEEL PRODUCTS COMPANY RANKIN, (PITTSBURGH DISTRICT) PA. BRIDGE DEPARTMENT	
PROJECT PWA PROJECT MR. 1010 D		LOCATION DEER ISLE - SEBOWICK BRIDGE, HANCOCK COUNTY, MAINE	
CUSTOMER ORDER NO. REFERENCE		APPROVED BY DWG. NO. CONTRACT NO.	
DRAWN L.M. 5-18-38		CHECKED L.M. 5-22-38	
REVISED DATE		TRACED	

